

BROADVIEW PLACE in Boise

Enjoy Broadview Place, a multi-family community located in the highly sought-after West Bench neighborhood in Boise, Idaho. The neighborhood features 3-story townhomes with a fenced in dog park and a shaded gazebo. Situated on the corner of Ustick Road and Milwaukee Street, the homes are 5 miles to downtown Boise, and 7 miles to downtown Meridian. Within five minutes, you can enjoy shopping and dining at the Boise Towne Square Mall.



Featured Plan

The Targhee (2,278 Sq Ft, 3-4 BR/2.5-3.5 BA, 3-Story)



Directions to Community:

Take exit 1B from Westbound 184, Right on N Cole Road, Left onto W Northview Street, Right on N Milwaukee.



Closest Sales Center: Charlesworth

6106 S Carlburg Ave, Boise, ID

BROADVIEW PLACE



Features

New 3-Story Townhomes in Boise
2,278+ Square Feet
3-4 Bedrooms | 2.5-3.5 Bathrooms



Amenities

Gazebo
Fenced Dog Park



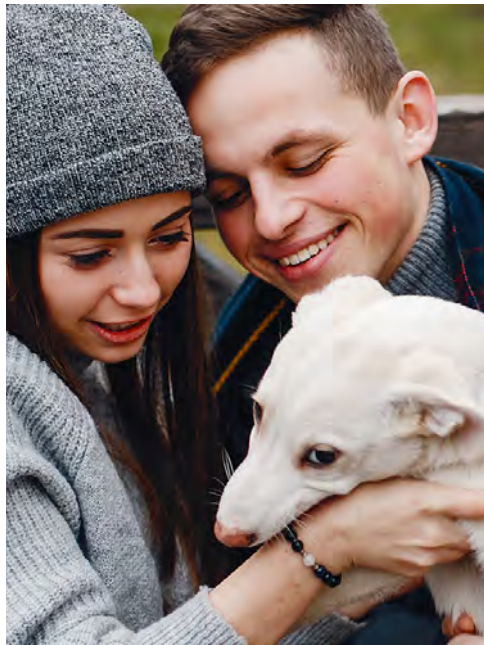
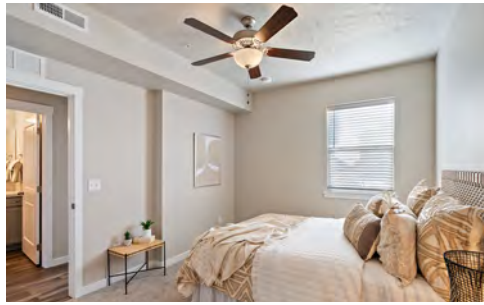
Schools

Boise School District
Morley Nelson Elementary School
Fairmont Middle School
Capital High School



HOA Dues

Set Up Fee: \$250
Annual Dues: \$1280
Transfer Fee: \$150



Areas of Interest



Boise Airport: Less than 15 Minutes

Boise State University: Less than 15 Minutes

Boise Towne Square: Less than 5 minutes

Hospitals & Urgent Care Centers

St. Luke's Hospital (Less than 30 Minutes)

St. Alphonsus Hospital (Approximately 10 Minutes)

Primary Health (Approximately 7 Minutes)

Shopping

Grocery and Retail Stores (2-10 Minutes) including Walmart, Target, Winco, Home Depot and more.

Dining

Local restaurants (3-10 minutes) including Romio's Greek and Italian Restaurant, Island Sushi and Ramen and Idaho Pizza Company.



*In a continuous effort by Hubble Homes to improve the quality of your home, we reserve the right to change features, prices, plans and specifications without notice. Dimensions and square feet are approximations only. Images are for marketing purposes only. Information is subject to change. Please make sure to call one of our New Home Specialists for any current and updated information. © 2022 Hubble Homes, LLC. RCE-049. Revised 2022 01-31.